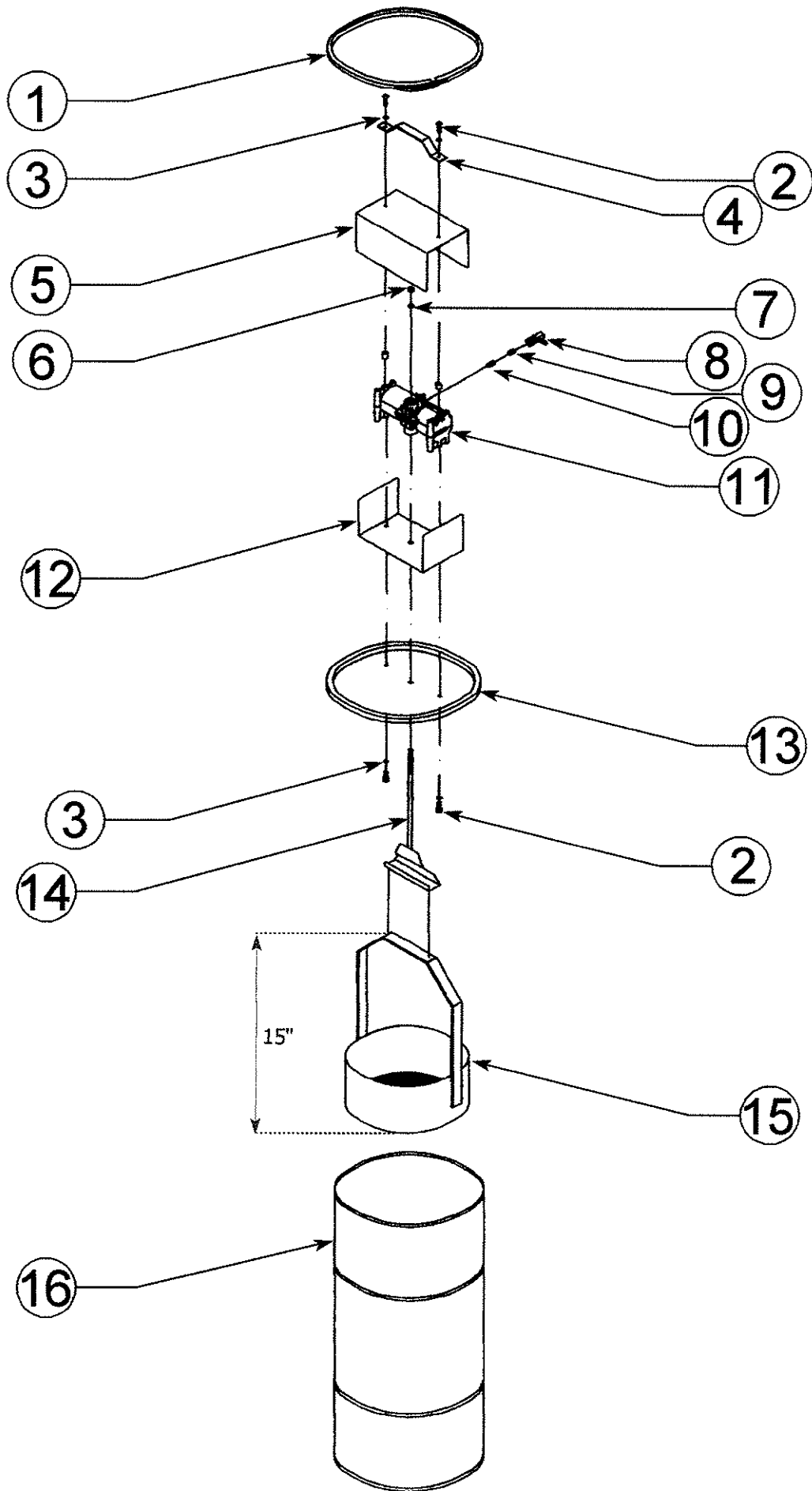


AK16

ITEM#	PART #	DESCRIPTION	Aug-14	GENERAL INFORMATION
1	11620	16 GALLON DRUM LEVER LOCK	22.37	RESERVOIR SIZE 16 GALLONS
2	15056	1/4-20 x 1-1/4" TRUSS HD SCREW	0.44	SOLVENT CAPACITY 4 - 12 GALLONS
3	16080	1/4 LOCK WASHER	0.38	PARTS BASKET 12" DIA. X 4-1/2"D
4	40036	HANDLE PAINTED	24.33	AIR CONNECTION 1/4" NPT
5	40006	MOTOR COVER PAINTED	53.29	AIR REQUIREMENTS 20 - 90 PSI
6	13216	3/8-24 NYLON LOCKNUT	1.35	
7	10552	3/8"ID METAL SPACER	5.25	
8	15856	1/4 BRASS BALL VALVE	21.02	
9	12080	1/4 x 1/8 REDUCER BUSHING	1.95	
10	30025	1/8 BRASS HEX NIPPLE	1.50	
11	13032	AIR MOTOR (HP200/A20/13002/1)	520.01	
NS*	99-00608A	METAL MOTOR REPAIR VALVE KIT (FOR HP200 AIR MOTOR)	203.72	
NS*	15896	PLASTIC MOTOR REPAIR VALVE KIT (FOR OLD STYLE GF-701-4 AIR MOTOR)	186.75	
12	40221	MOTOR ENCLOSURE BASE PAINTED	53.29	
13	11618	DRUM COVER DRILLED	15.32	
14	40151	BASKET HANGER ASSEMBLY	52.39	
15	40001	12" DIA. PARTS BASKET	123.54	
	SS40001	STAINLESS 12" DIA. PARTS BASKET	606.48	
16	D16	16 GALLON DRUM - RED	Blue Sheet	

* MOTOR REPAIR VALVES ARE NOT SHOWN, THEY ARE THE PIECE WITHIN THE MOTOR WHERE THE AIR CONNECTIONS ARE MADE. THIS IS THE MOST COMMON REPLACED ITEM ON THE AK UNITS. YOU NEED TO CLARIFY IF THE CUSTOMER'S MOTOR HAS A PLASTIC OR METAL REPAIR VALVE.



AK16